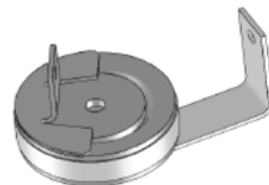


## Features

- High Current Handling Capability 40,000A @ 8/20μ s
- Low Capacitance and Insertion Loss
- Quick Response and Long Service Life
- Moisture sensitivity level: Level 1

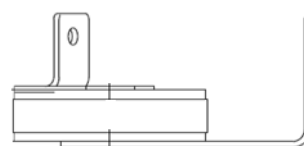
## Exterior





## Application information

- POWER

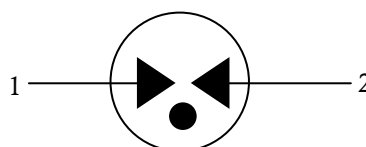
## Package (Top View)



## Agency Approvals

Icon	Description
<b>RoHS</b>	Compliance with 2011/65/EU
<b>HF</b>	Compliance with IEC61249-2-21:2003
	Mean lead free
	Compliance with UL 1449.Certificate E337906

## Schematic Symbol



## Electrical Parameter

DC Breakdown Voltage <sup>1)2)</sup>	100V/s	550-800	V
Impulse Spark-over Voltage	At1.2/50 μs 6KV	for 99 % of measured values ≤1500	V
	At1.2/50 μs 6KV	Typical values of distribution ≤1500	V
Max. continuous operating voltage	U <sub>c</sub>	255	V <sub>rms</sub>
Nominal discharge current	8/20μs	I <sub>n</sub> =20,000	A
Maximum discharge current	8/20us	I <sub>max</sub> =40,000	A
Follow current at 50/60 Hz	At 255V	100	A <sub>rms</sub>
Arc Voltage	At 1A	~24	V
Insulation Resistance	DC=100V	≥1	GΩ
Capacitance at 1MHz	VDC=0.5V	≤4	pF
Weight		~10	g
Operating And Storage Temperature		-40-125	℃

1) At delivery AQL0.65 level II ISO 2859

2) In ionized mode

3) Terms and waveforms in accordance with IEC 61643-11

## Gas Discharge Tube

Version: A0 2020-4-27

## Part Numbering System

B UB 601 M - 03

(1) (2) (3) (4) (5)

(1) Bencent

(2) UB means Surge Rating  $8/20\mu s@I_{max}=40KA$ 

(3) DC Breakdown Voltage, e.g.,  $601=60 \times 10^1 V=600V$ 

(4) Tolerance of DC Breakdown Voltage,  $M=+-20\%$ ,  
 $N=+-30\%$ , the Specific tolerance is decided by the table of

“Electrical Parameter”

(5) “-03” means the special structure of this type.

## Product Characteristics

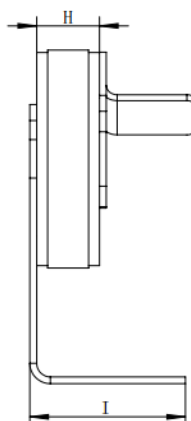
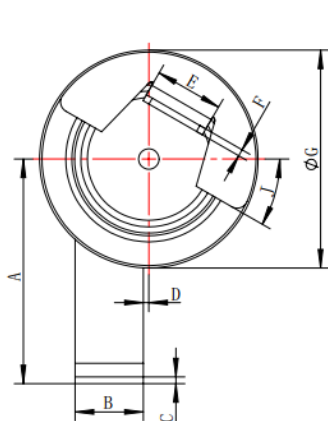
Lead Material	Copper
Body Material	Ceramics
Terminal Finish	100% Matte-Tin Plated

## Environmental Reliability Characteristics

Testing items	Technical standards
High Temperature Storage Test	Temperature: $125^{\circ}C$ Time: 2H
Low Temperature Storage Test	Temperature: $-40^{\circ}C$ Time: 2H
Vibration	Frequency: 10-500Hz Amplitude: 0.15mm Time: 45min

Note: Up-screen program can be specified by customer's request via contacting Bencent service

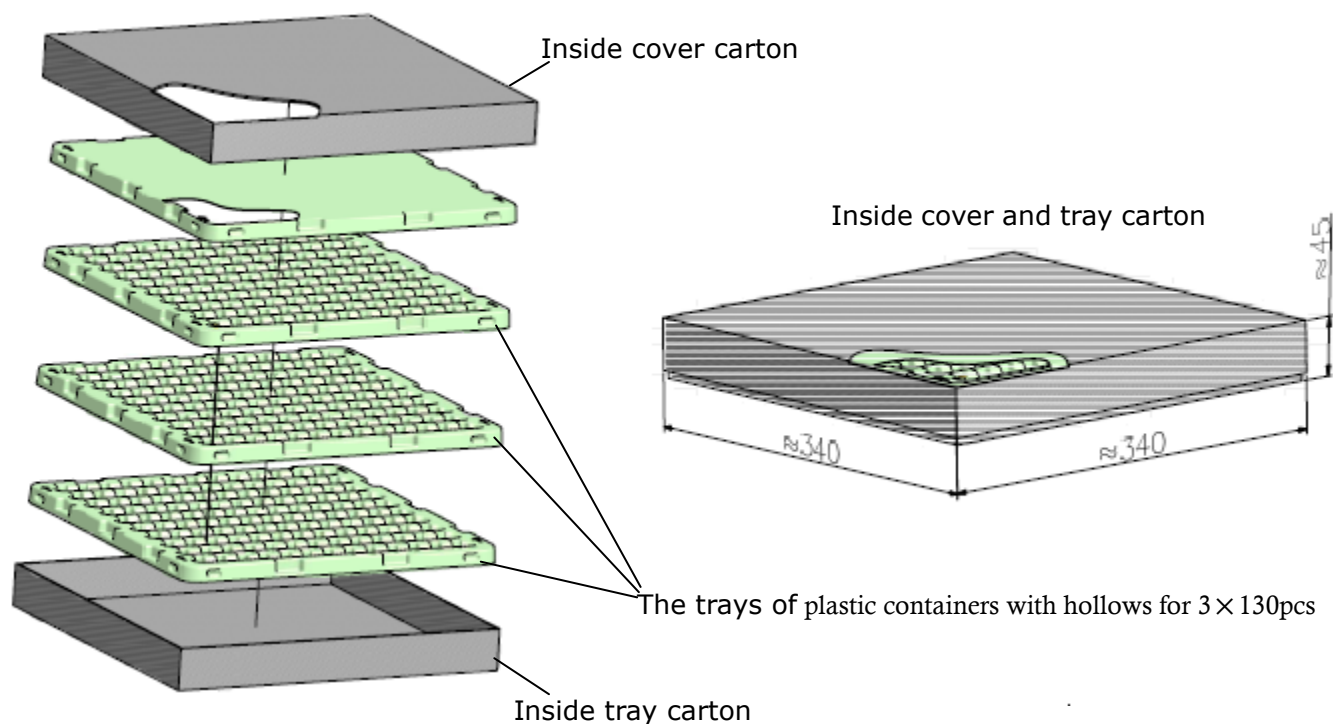
## Product Dimensions



REF	mm	inch
A	(16.5)	(0.65)
B	$5 \pm 0.1$	$0.197 \pm 0.004$
C	$0.5 \pm 0.1$	$0.02 \pm 0.004$
D	(0.4)	(0.157)
E	$5 \pm 0.1$	$0.197 \pm 0.004$
F	$0.5 \pm 0.1$	$0.02 \pm 0.004$
G	$\Phi 16 \pm 0.3$	$\Phi 0.63 \pm 0.012$
H	$4.6 \pm 0.3$	$0.181 \pm 0.012$
I	$11.4 \pm 0.3$	$0.449 \pm 0.012$
J	$30^{\circ}$	

### Package Box Information

Outline	Plastic containers (PCS)	Inside Cover and tray carton (PCS)	Outside carton (PCS)	Carton Size(mm)		
				L	W	H
Box	130	390	1560	360	360	220



**Remarks:** The outside carton has four inside cover and tray cartons for 4 × 390pcs