

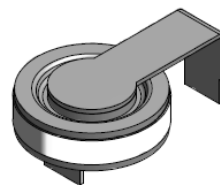
## Features

- High Current Handling Capability 40,000A @ 8/20μ s
- Low Capacitance and Insertion Loss
- Quick Response and Long Service Life
- Moisture sensitivity level: Level 1

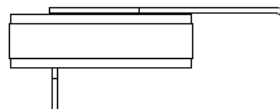
## Application Information

- AC 90~264V POWER



## Exterior



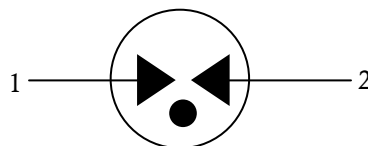
## Package (Top View)



## Agency Approvals

Icon	Description
<b>RoHS</b>	Compliance with 2011/65/EU
<b>HF</b>	Compliance with IEC61249-2-21:2003
	Mean lead free
	Compliance with UL 1449. Certificate E337906

## Schematic Symbol



## Electrical Parameter

DC Breakdown Voltage <sup>1)2)</sup>	100V/s	480-720	V
Impulse Spark-over Voltage	At 1.2/50 μs 6KV	for 99 % of measured values ≤ 1500	V
	At 1.2/50 μs 6KV	Typical values of distribution ≤ 1400	V
Max. continuous operating voltage	U <sub>c</sub>	260	V <sub>rms</sub>
Nominal discharge current <sup>3)</sup>	8/20μs	I <sub>n</sub> =20,000	A
Maximum discharge current <sup>3)</sup>	8/20us	I <sub>max</sub> =40,000	A
Follow current at 50/60 Hz		U <sub>c</sub> =260V, I <sub>f</sub> =100 Arms	
TOV test <sup>3)</sup>		1200V, 300A, 200ms	
Arc Voltage	At 1A	~24	V
Insulation Resistance	DC=100V	≥1	GΩ
Capacitance at 1MHz	VDC=0.5V	≤4	pF
Weight		~5	g
Operating And Storage Temperature		-40-90	℃

1) At delivery AQL 0.65 level II ISO 2859

2) In ionized mode

3) Terms and waveforms in accordance with IEC 61643-11

### Part Numbering System

B UB 601 M - 09  
(1) (2) (3) (4) (5)

(1) Bencent

(2) UB means Surge Rating  $8/20\mu s@I_{max}=40KA$

(3) DC Breakdown Voltage, e.g., 601= $60 \times 101V=600V$

(4) Tolerance of DC Breakdown Voltage,  $M=+/-20\%$ ,  
 $N=+/-30\%$ , the Specific tolerance is decided by the table of  
“Electrical Parameter”

(5) “-09” means the special structure of this type.

### Product Characteristics

Lead Material	Copper
Body Material	Ceramics
Terminal Finish	100% Matte-Tin Plated

### Environmental Reliability Characteristics

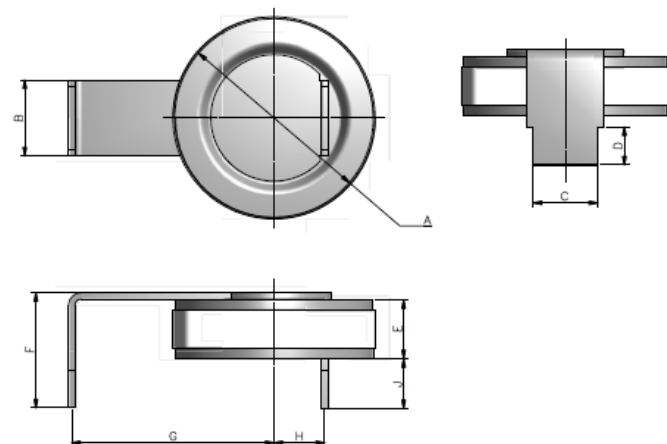
Testing items	Technical standards
High Temperature Storage Test	Temperature: $90^{\circ}C$ Time: 2H
Low Temperature Storage Test	Temperature: $-40^{\circ}C$ Time: 2H
Vibration	Frequency: 10-500Hz Amplitude: 0.15mm Time: 45min
Resistance of soldering heat	Temperature: $260 \pm 5^{\circ}C$ Time of dip soldering: 10s, 1time

Note: Up-screen program can be specified by customer's request via contacting Bencent service

### Solderability Test

Solderability	Solder Pot Temperature:	$245^{\circ}C \pm 5^{\circ}C$
	Solder Dwell Time:	4-6 seconds

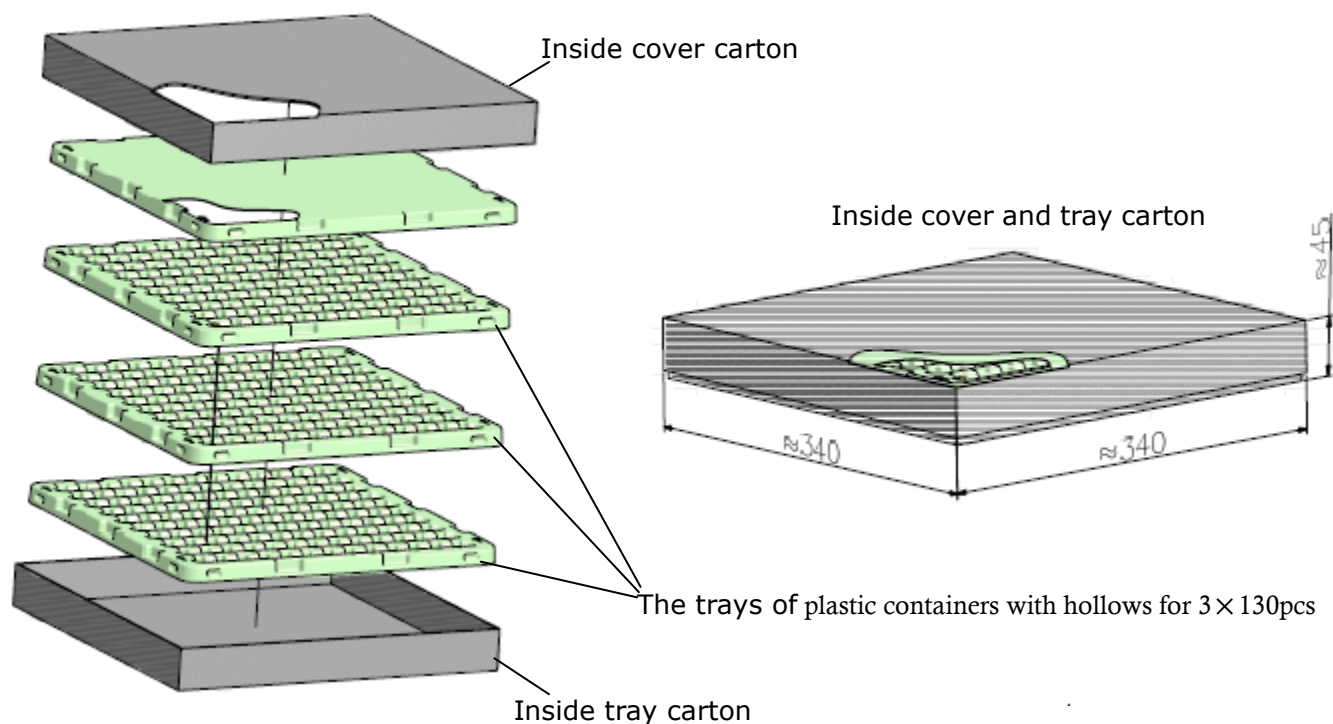
### Product Dimensions



REF	mm	inch
A	$\Phi 16 \pm 0.3$	$\Phi 0.630 \pm 0.012$
B	$6 \pm 0.2$	$0.236 \pm 0.008$
C	$5 \pm 0.2$	$0.197 \pm 0.008$
D	$3 \pm 0.2$	$0.118 \pm 0.008$
E	$4.6 \pm 0.3$	$0.181 \pm 0.012$
F	$9.1 \pm 0.2$	$0.358 \pm 0.008$
G	$16 \pm 0.3$	$0.630 \pm 0.012$
H	$4 \pm 0.3$	$0.157 \pm 0.012$
J	$4 \pm 0.2$	$0.157 \pm 0.008$

Package Box Information

Outline	Plastic containers (PCS)	Inside Cover and tray carton (PCS)	Outside carton (PCS)	Carton Size(mm)		
				L	W	H
Box	130	390	1560	360	360	220



**Remarks:** The outside carton has four inside cover and tray cartons for 4 × 390 pcs