

Features

- High Current Handling Capability 40,000A @ 8/20μ s
- Low Capacitance and Insertion Loss
- Quick Response and Long Service Life
- Moisture sensitivity level: Level 1

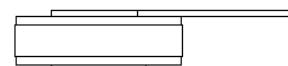
Exterior





Application Information

- AC 90~264V POWER

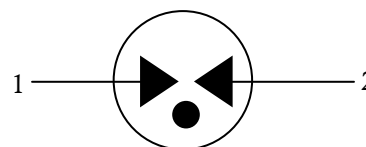
Package (Top View)



Agency Approvals

Icon	Description
RoHS	Compliance with 2011/65/EU
HF	Compliance with IEC61249-2-21:2003
	Mean lead free
	Compliance with UL 1449.Certificate E337906

Schematic Symbol



Electrical Parameter

DC Breakdown Voltage ¹⁾²⁾	100V/s	480-720	V
Impulse Spark-over Voltage	At 1.2/50 μs 6KV	for 99 % of measured values ≤ 1500	V
	At 1.2/50 μs 6KV	Typical values of distribution ≤ 1400	V
Max. continuous operating voltage	U _C	255	V _{rms}
Nominal discharge current ³⁾	8/20μs	I _n =20,000	A
Maximum discharge current ³⁾	8/20us	I _{max} =40,000	A
Follow current at 50/60 Hz		U _C =255V, I _f =100 Arms	
TOV test		1200V, 300A, 200ms	
Arc Voltage	At 1A	~24	V
Insulation Resistance	DC=100V	≥1	GΩ
Capacitance at 1MHz	VDC=0.5V	≤4	pF
Weight		~5	g
Operating And Storage Temperature		-40-90	°C

1) At delivery AQL 0.65 level II ISO 2859

2) In ionized mode

3) Terms and waveforms in accordance with GB/T 18802.311-2007

Part Numbering System

B UB 601 M - 10
(1) (2) (3) (4) (5)

(1) Bencent

(2) UB means Surge Rating 8/20 μ s@ I_{max}=40KA

(3) DC Breakdown Voltage, e.g., 601=60 \times 101V=600V

(4) Tolerance of DC Breakdown Voltage, M=+20%,
N=+30%, the Specific tolerance is decided by the table of
“Electrical Parameter”

(5) “-10” means the special structure of this type.

Product Characteristics

Lead Material	Copper
Body Material	Ceramics
Terminal Finish	100% Matte-Tin Plated

Environmental Reliability Characteristics

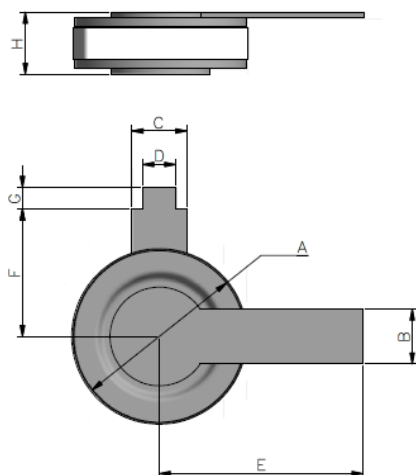
Testing items	Technical standards
High Temperature Storage Test	Temperature: 90℃ Time: 2H
Low Temperature Storage Test	Temperature: -40℃ Time:2H
Vibration	Frequency:10-500Hz Amplitude: 0.15mm Time: 45min
Resistance of soldering heat	Temperature: 260 \pm 5℃ Time of dip soldering: 10s, 1time

Note: Up-screen program can be specified by customer's request via contacting Bencent service

Solderability Test

Solderability	Solder Pot Temperature:	245℃ \pm 5℃
	Solder Dwell Time:	4-6 seconds

Product Dimensions



REF	mm	inch
A	$\Phi 16 \pm 0.5$	$\Phi 0.630 \pm 0.020$
B	5 ± 0.1	0.197 ± 0.004
C	5 ± 0.1	0.197 ± 0.004
D	3 ± 0.1	0.118 ± 0.004
E	18.6 ± 0.2	0.732 ± 0.008
F	11.6 ± 0.2	0.457 ± 0.008
G	2 ± 0.1	0.079 ± 0.004
H	5.6 ± 0.2	0.220 ± 0.008

Package Box Information

Outline	Plastic containers (PCS)	Inside Cover and tray carton (PCS)	Outside carton (PCS)	Carton Size(mm)		
				L	W	H
Box	25	275	1650	360	360	220

Remarks: The outside carton has four inside cover and tray cartons for 6×275 pcs

The trays of plastic containers with hollows for 11×25 pcs

